

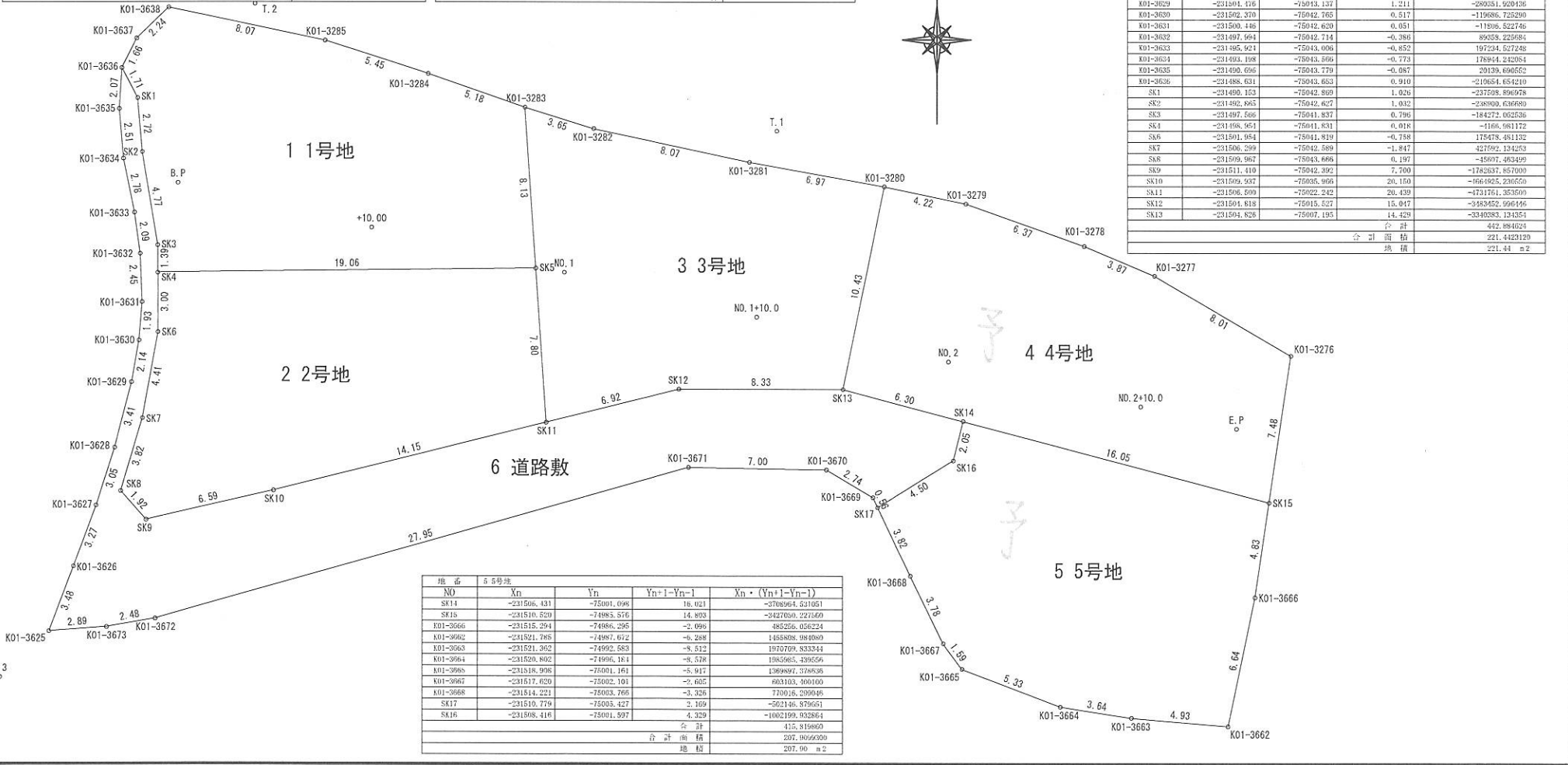
地番	1号地				
NO	Xn	Yn	Yn+1-Yn-1	Xn · (Yn+1-Yn-1)	
SK4	-23196.954	-75011.831	-19.060	4312370.083210	
SK3	-23197.566	-75041.837	-0.756	184272.062526	
SK2	-23192.865	-75042.627	-1.032	238960.636890	
SK1	-23190.153	-75043.869	-1.026	237508.896978	
K01-3636	-23188.631	-75043.653	-0.055	12731.874705	
K01-3637	-23187.137	-75042.921	2.343	-542374.361991	
K01-3638	-23185.578	-75041.310	9.596	-220501.904488	
K01-3285	-23187.214	-75033.418	13.077	-3027158.676711	
K01-3284	-23188.918	-75028.233	10.083	-2344102.780194	
K01-3283	-23186.818	-75023.335	5.466	-1363042.779072	
SK5	-23196.723	-75022.777	-18.496	4281800.280608	
合計				323.432211	
合計面積				216.7161555	
地積				216.71 m <sup>2</sup>	

地番	2号地				
NO	Xn	Yn	Yn+1-Yn-1	Xn · (Yn+1-Yn-1)	
SK1	-23196.954	-75011.831	19.012	-4488703.062098	
SK5	-23198.723	-75022.777	19.589	-4534828.284847	
SK11	-231506.600	-75022.242	-13.189	3053339.239650	
SK10	-231509.937	-75035.966	-20.150	4664925.239650	
SK9	-231511.410	-75042.992	-7.700	1782631.857000	
SK8	-231509.967	-75043.666	-0.197	46607.863499	
SK7	-231506.299	-75042.589	1.847	-427592.134263	
SK6	-231501.954	-75041.819	0.758	-175478.481132	
合計				407.597249	
合計面積				203.7886245	
地積				203.79 m <sup>2</sup>	

地番	3号地				
NO	Xn	Yn	Yn+1-Yn-1	Xn · (Yn+1-Yn-1)	
K01-3283	-23190.612	-75023.335	2.927	-677873.021324	
K01-3282	-23191.086	-75019.859	11.377	-2633980.909245	
K01-3281	-23193.371	-75011.958	14.752	-3414999.209992	
K01-3280	-23194.094	-75005.098	4.763	-1102608.798852	
SK13	-231504.826	-75007.195	-10.429	2414363.830554	
SK12	-231504.818	-75013.527	-15.047	3483452.996146	
SK11	-231506.500	-75022.242	-7.250	1678422.125000	
SK5	-23198.723	-75022.777	-1.093	233028.194239	
合計				414.126626	
合計面積				207.0633190	
地積				207.06 m <sup>2</sup>	

地番	4号地				
NO	Xn	Yn	Yn+1-Yn-1	Xn · (Yn+1-Yn-1)	
K01-3279	-23193.900	-75000.994	6.231	-1412442.877521	
K01-3278	-23197.688	-74994.956	9.383	-2218441.389894	
K01-3277	-23199.082	-74991.381	10.494	-2423351.398558	
K01-3276	-231503.120	-74984.462	5.805	-1343876.611600	
SK15	-231510.320	-74985.676	-16.636	3851496.010720	
SK14	-231506.431	-75001.698	-21.619	5064937.531789	
SK13	-231504.826	-75007.195	-4.009	926019.394090	
合計				427.649753	
合計面積				213.8248765	
地積				213.82 m <sup>2</sup>	

工事名	(仮称)小熊谷谷地区宅地造成工事			
箇所	和歌山県日高郡日高川町小熊谷3144-1, 3150-1			
調査	測量	設計	製図	
図名	求積図	図番	8	
縮尺	S=1/200	面号		



地番	# 道路敷				
NO	Xn	Yn	Yn+1-Yn-1	Xn · (Yn+1-Yn-1)	
SK14	-231506.431	-75001.698	6.598	-1295973.000748	
SK16	-231508.416	-75001.597	-4.329	1002199.932854	
SK17	-231510.779	-75005.427	-4.071	942480.381109	
K01-3669	-231510.279	-75005.668	-2.691	602158.235979	
K01-3670	-231508.889	-75008.028	-9.363	2167617.727707	
K01-3671	-231508.767	-75013.931	-33.898	7847684.183766	
K01-3672	-231516.387	-75041.026	-29.340	6792690.794589	
K01-3673	-231516.802	-75044.371	-6.329	1533753.037658	
K01-3675	-231517.012	-75047.255	-1.667	385398.859794	
K01-3676	-231513.759	-75046.038	2.333	-547451.853159	
K01-3677	-231510.089	-75044.902	2.082	-177275.028656	
K01-3678	-231507.785	-75043.976	1.785	-308611.240525	
K01-3679	-231504.476	-75043.137	1.211	-280351.620436	
K01-3680	-231502.370	-75042.765	0.517	-119686.725290	
K01-3631	-231500.446	-75042.620	0.051	-11806.622746	
K01-3632	-231497.664	-75042.714	-0.386	89558.225684	
K01-3633	-231495.921	-75043.006	-0.852	197534.627248	
K01-3634	-231493.198	-75043.566	-0.773	178944.242084	
K01-3635	-231490.696	-75043.779	-0.087	20139.696552	
K01-3636	-231488.631	-75043.633	0.910	-210654.654219	
SK1	-231490.153	-75042.909	1.026	-237598.896978	
SK2	-231492.865	-75042.627	1.932	-348909.636890	
SK3	-231497.566	-75041.837	0.796	-184272.062526	
SK4	-231498.954	-75011.831	0.018	-1166.981172	
SK6	-231501.954	-75041.819	-0.788	175478.481132	
SK7	-231506.299	-75042.589	-1.847	427592.134263	
SK8	-231509.967	-75043.666	0.197	-45607.863499	
SK9	-231511.410	-75042.992	7.700	-1782637.857000	
SK10	-231509.937	-75035.966	20.150	-1664925.239650	
SK11	-231506.500	-75022.242	20.439	-4731764.353699	
SK12	-231504.818	-75013.527	15.947	-3683452.996146	
SK13	-231504.826	-75007.195	14.429	-3340283.134354	
合計				442.984623	
合計面積				221.4423120	
地積				221.44 m <sup>2</sup>	

地番	5号地				
NO	Xn	Yn	Yn+1-Yn-1	Xn · (Yn+1-Yn-1)	
SK14	-231506.431	-75001.698	16.021	-3768964.521051	
SK18	-231510.529	-74985.576	14.803	-3427050.227160	
K01-3666	-231515.294	-74986.296	-2.099	485256.056224	
K01-3667	-231521.785	-74987.672	-6.288	1458808.984090	
K01-3668	-231521.362	-74992.583	-5.512	1919769.833344	
K01-3664	-231506.802	-74996.184	-8.576	1985965.139559	
K01-3668	-231518.908	-75001.161	-5.917	1369897.378506	
K01-3667	-231517.629	-75002.101	-2.605	603103.500100	
K01-3668	-231514.221	-75003.765	-3.326	770916.299946	
SK17	-231510.779	-75005.427	2.169	-502146.879651	
SK16	-231508.416	-75001.597	4.329	-1002199.932854	
合計				415.819860	
合計面積				207.9696909	
地積				207.96 m <sup>2</sup>	